

# AYLESBURY VALE DISTRICT COUNCIL

## WENDOVER NEIGHBOURHOOD PLANNING REFERENDUM

Information for voters

Referendum: Thursday 30 January 2020



### About this leaflet

On Thursday 30 January 2020, there will be a referendum on a neighbourhood development plan for your area. This leaflet explains more about the referendum that is going to take place and how you can take part in it.

### Referendum on the Neighbourhood Plan

A referendum asks you to vote 'yes' or 'no' to a question. For this referendum you will receive a ballot paper with this question:

*'Do you want Aylesbury Vale District Council to use the neighbourhood plan for Wendover to help it decide planning applications in the neighbourhood area?'*

### How do I vote in the referendum?

You vote by putting a cross (X) in the 'Yes' or 'No' box on your ballot paper. Put a cross in only **one** box or your vote will not be counted.

If more people vote 'yes' than 'no' in this referendum, then Aylesbury Vale District Council will use the Neighbourhood Development Plan to help it decide planning applications in Wendover parish.

The Neighbourhood Development Plan once adopted will then become part of the Development Plan. In the Aylesbury Vale District Council Local Planning Authority area the development plan currently consists of the adopted Aylesbury Vale District Local Plan, 2004 saved policies and the Buckinghamshire Minerals and Waste Local Plan 2016-2036.

If more people vote 'no' than 'yes', then planning applications will be decided without using the Neighbourhood Development Plan as part of the Development Plan for the local area.

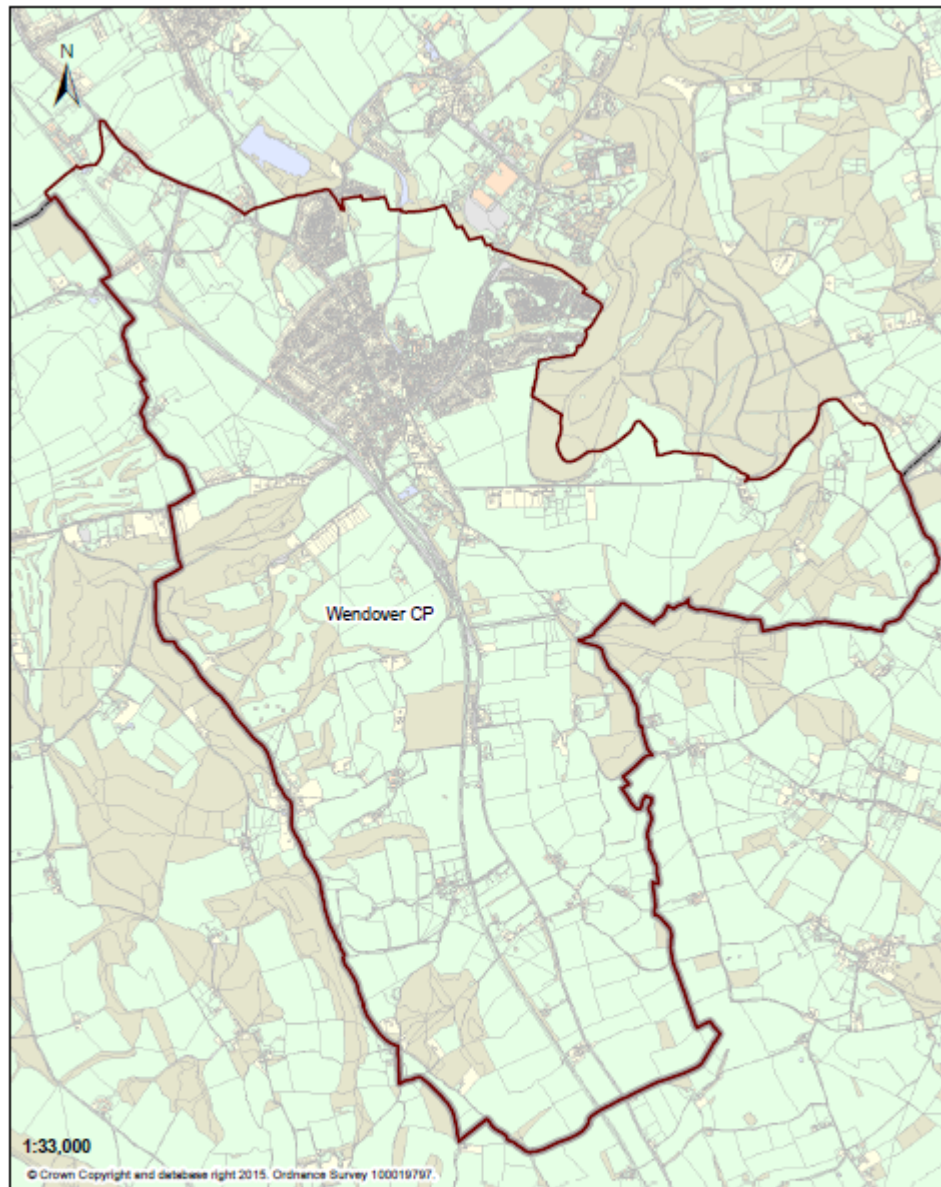
### What is Neighbourhood Planning?


Neighbourhood planning aims to help local communities play a direct role in planning the areas in which they live and work.

A community can prepare a neighbourhood plan. This plan can show how the community wants land to be used and developed in its area.

### What is a neighbourhood area?

A neighbourhood area can cover single streets or large urban or rural areas. The boundaries of a neighbourhood area are put forward by a parish or town council or a neighbourhood forum (a group of at least 21 people in areas without parish councils). In Wendover, the boundary of the neighbourhood area was determined by Aylesbury Vale District Council and is identical to the parish area of Wendover (see overleaf).



 Wendover Parish



### **Who can prepare a Neighbourhood Plan?**

Neighbourhood plans are prepared by town or parish councils, or neighbourhood forums. In this case, the Wendover Neighbourhood Plan was prepared by Wendover Parish Council.

### **What is a Development Plan?**

In England, planning applications are determined by local planning authorities in accordance with the Development Plan. A Development Plan is a set of documents that set out the policies for the development and use of land across the entire local authority area.

### **Who is the Planning Authority?**

Within Aylesbury Vale, the local planning authority is Aylesbury Vale District Council. Aylesbury Vale District Council is the lead authority for Neighbourhood Planning matters in parish, including for carrying out Neighbourhood Planning Referendums.

### **Can I Vote?**

You can vote in the referendum if you live in the parish of Wendover and;

- You are registered to vote in local council elections, and
- You are 18 years of age or over on Thursday 30 January 2020

You have to be registered to vote by Tuesday 14 January 2020 to vote in the referendum. You can check if you are registered to vote by calling 01296 585701 or emailing [ereg@aylesburyvaledc.gov.uk](mailto:ereg@aylesburyvaledc.gov.uk).

The referendum will be conducted in accordance with procedures which are similar to those used at local government elections.

### **How to Vote**

There are three ways of voting:

#### **In person on Thursday 30 January 2020:**

- Most people vote in person at their local polling station. It is easy and a member of staff will always be happy to help if you are not sure what to do.
- You will receive a polling card telling you where your polling station is, but you do not need a poll card to vote.
- The Polling Station will be open from 7am to 10pm and is located at;

Wendover Memorial Hall, Wharf Road, HP22 6HF

#### **By post:**

- To vote by post, you will need to complete and return an application form. Application forms and instructions are available on the Council's website at [www.aylesburyvaledc.gov.uk/absentvoting](http://www.aylesburyvaledc.gov.uk/absentvoting).
- Completed applications for this election must arrive by 5pm Wednesday 15 January 2020.
- You should receive your postal vote about a week before polling day. If you have not received it in time, you can get a replacement up to **5pm on polling day**.

#### **By proxy:**

- If you can't go to the polling station and don't wish to vote by post, you may be able to vote by proxy. This means allowing somebody you trust to vote on your behalf.
- To vote by proxy you will need to complete and return an application form. Application forms and instructions are available on the Council's website at [www.aylesburyvaledc.gov.uk/absentvoting](http://www.aylesburyvaledc.gov.uk/absentvoting).
- Completed applications for this election must arrive by 5pm Wednesday 22 January 2020.
- When you apply for a proxy vote you must say why you cannot vote in person.
- Anyone can be your proxy as long as they are on the Electoral Roll and are willing to vote on your behalf. You do need to tell them how you want to vote.

If you cannot access the Council's website, application forms are available from the election team, by calling 01296 585701.