

AYLESBURY VALE DISTRICT COUNCIL

Wendover Neighbourhood Development Plan Information Statement

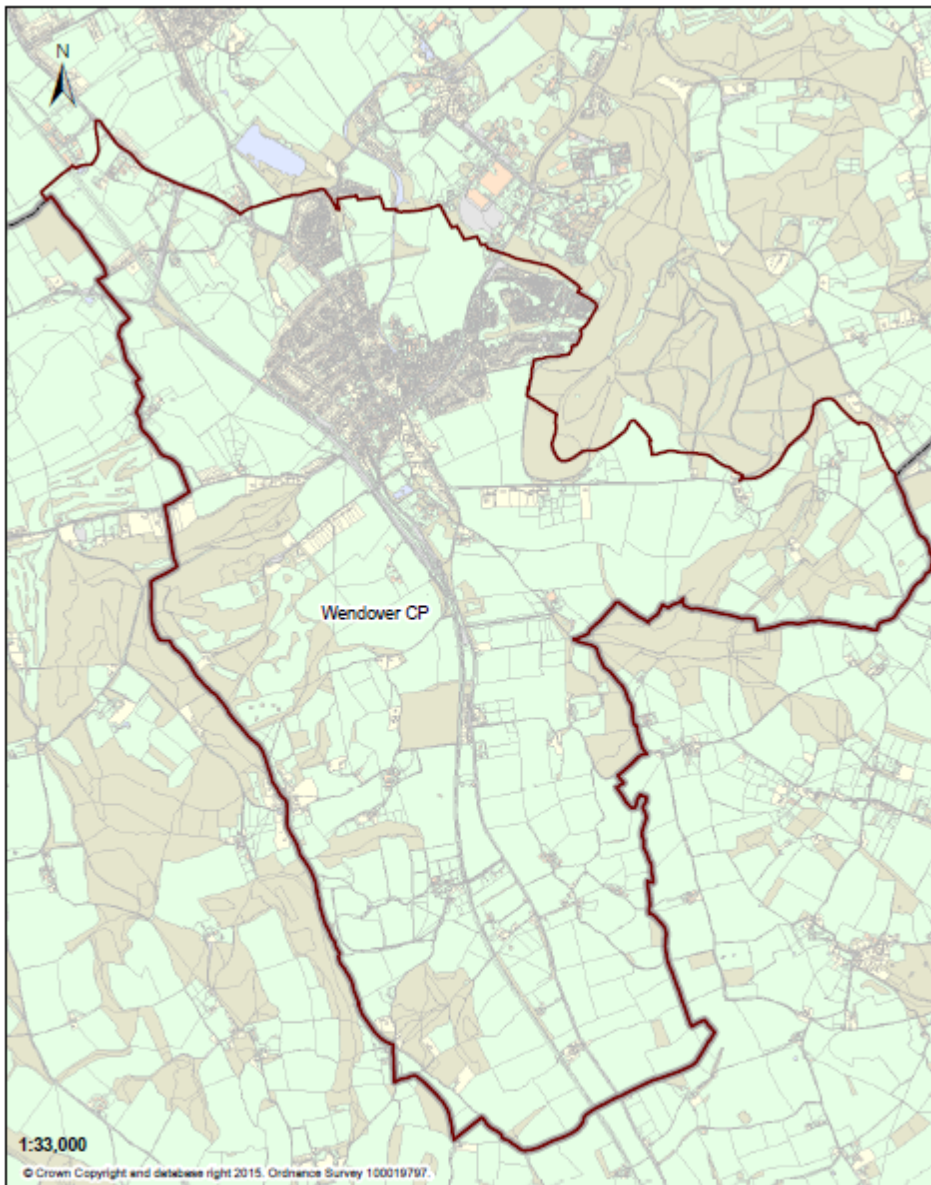
Referendum: 30 January 2020

A neighbourhood planning referendum will be held for the Wendover Neighbourhood Plan 2019 – 2033 on 30 January 2020.

The question which will be asked in the Referendum is:

'Do you want Aylesbury Vale District Council to use the neighbourhood plan for Wendover to help it decide planning applications in the neighbourhood area?'

The referendum area and the neighbourhood plan area covers the **same area as the parish of Wendover** (Fig. 1).




 Wendover Parish



Fig 1. Map illustrating the Wendover Parish Boundary



A person is entitled to vote in the Referendum if on 30 January 2020:

- he or she is entitled to vote in a local government election in the referendum area; and
- his or her qualifying address for the election is in the Referendum area. A persons qualifying address is, in relation to a person registered in the register of electors, the address in respect of which he or she is entitled to be so registered.

The Referendum (campaign) expenses limit:

Local Government Electors (6,235) x 0.059 + 2,362 = £2,729.86

For the avoidance of doubt, this is the number of local government electors on the register which is in force 1 December at the beginning of the Referendum period.

The Referendum will be conducted in accordance with procedures which are similar to those used at local government elections.

A copy of the specified documents, that is those documents listed below, may be inspected at:

Table 1. Locations where documents maybe inspected. Please note over the Christmas and New Year Period 2019/20 these opening hours may vary. Wendover Parish Council is closed Christmas Day, Boxing Day and New Years Day and likely to close early Christmas Eve and New Years Eve.

The AVDC offices are open at <https://www.aylesburyvaledc.gov.uk/finding-us>

Deposit Points	Monday	Tuesday	Wednesday	Thursday	Friday	Saturday	Sunday
Wendover Parish Council, Clock Tower/High St, Wendover, Aylesbury HP22 6DU	9.00am-3.00pm	9.00am-3.00pm	9.00am-3.00pm	9.00am-3.00pm	9.00am-3.00pm	CLOSED	CLOSED
Wendover Community Library High Street, Wendover HP22 6DU	CLOSED	09.30am-5.00pm	CLOSED	09.30am-5.00pm	09.30am-7.00pm	10.00am-4.00pm	CLOSED
AVDC, The Gateway, Gatehouse Road Aylesbury, HP19 8FF	8:45am – 5:15pm	8:45am – 5:15pm	8:45am – 5:15pm	8:45am – 5:15pm	8:45am – 4:45pm	Closed	Closed

Alternatively the specified documents are available online at:

<https://www.aylesburyvaledc.gov.uk/wendover-neighbourhood-plan>

In addition, the specified documents are:

- The Wendover Neighbourhood Plan Referendum version
https://www.aylesburyvaledc.gov.uk/sites/default/files/page_downloads/Wendover%20NP%20Referendum%20Version%2011%2011%2019%20No%20Tracks.pdf :
- The report of the Independent Examiner into the Neighbourhood Plan
https://www.aylesburyvaledc.gov.uk/sites/default/files/page_downloads/Wendover%20Neighbourhood%20Plan%20Final%20Report%20181019%20v2.pdf ;
- A statement of the Local Planning Authority's satisfaction that the draft Neighbourhood Plan meets the basic conditions specified by statute and complies with the provision made by or under Section 38A and 38B of the Planning and Compulsory Purchase Act 2004
https://www.aylesburyvaledc.gov.uk/sites/default/files/page_downloads/AVDC%20statement%20on%20compliance%20with%20Basic%20Conditions%2022%2011%2019.pdf ;
- A statement that sets out general information as to Town and Country Planning including Neighbourhood Planning and the Referendum (information for voters). See on the Council website <https://www.aylesburyvaledc.gov.uk/wendover-neighbourhood-plan>