



WING PARISH COUNCIL

Town and Country Planning Act 1990 Neighbourhood Planning (General) Regulations 2012

AVDC hereby proposed to designate, on behalf of Wing Parish Council, a Neighbourhood Area for the purposes of making a Neighbourhood Development Plan as outlined on the accompanying map. This formal consultation provides members of the public and other stakeholders with an opportunity to comment on the proposed Neighbourhood Development Plan area and proposed neighbourhood planning body for Wing.

The consultation includes a map identifying the neighbourhood area for preparation of a Neighbourhood Development Plan (overleaf). The Neighbourhood Area is depicted as a red line.

The area which is the subject of this application is considered appropriate for designation as a Neighbourhood Area because it consists of the whole of the area of the Parish Council in accordance with section 61G(3)(a) of the Town and Country Planning Act 1990. The Neighbourhood Area will be coincident with the existing Wing Parish boundary because this is the logical choice of area to include the village of Wing, the attendant hamlet of Burcott and the local surroundings and environment, account of which must be taken in providing a holistic and sustainable Neighbourhood Plan. It is not deemed appropriate to establish a different area from that of the existing parish because an all-inclusive and sustainable Plan for the parish of Wing must cover all its features and environment. Wing Parish Council under its role as a formal parish council constitutes the first tier of local government, with discretionary powers and rights laid down by Parliament to represent its local communities and provide services for them.

Wing Parish Council, applying to AVDC for the designation of this Neighbourhood Area, is a relevant body for the purposes of section 61G of the Town and Country Planning Act 1990. To support the neighbourhood planning process a Wing Neighbourhood Steering Group has been established with Terms of Reference to be approved by the Parish Council and the intention is for the Steering Group to produce a detailed Neighbourhood Plan. Both the Steering Group and the Parish Council look forward to working in close co-operation with AVDC during the process to develop this document and the attendant Sustainability Appraisal. Wing Parish Council has a proven track record of working with the District and County Council to best ensure general conformity with the Vale of Aylesbury Plan and on infrastructure planning.

If you have any comments on the arrangements outlined in this consultation, please contact either of the below:

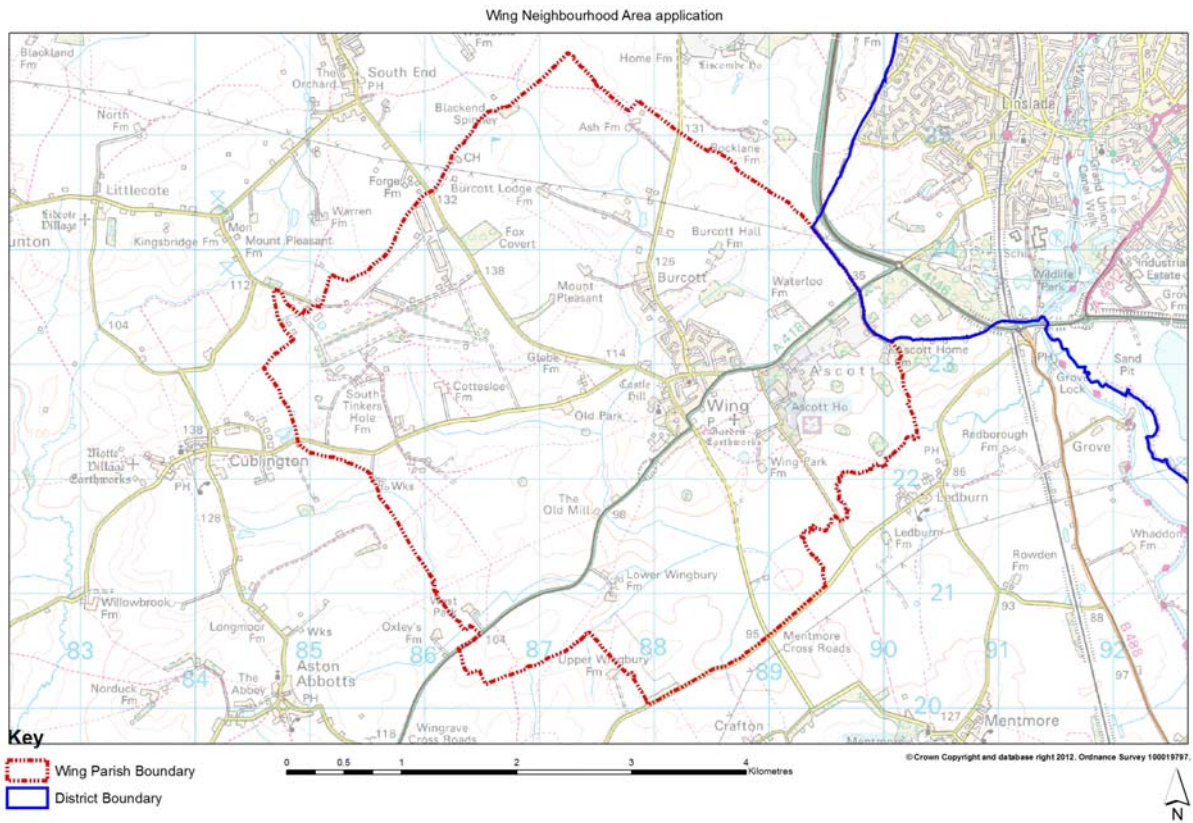
Maxine Hayes
Clerk to the Council
Holly Villa, 31 Princes Street
Toddington, Beds. LU5 6ED
Tel: 01525 875308
wingparishclerk@gmail.com

Forward Plans
Aylesbury Vale District Council
The Gateway
Gatehouse Road
Aylesbury
Buckinghamshire
HP19 8FF
(01296) 585439
valeplan@aylesburyvaledc.gov.uk



WING PARISH COUNCIL

The proposed Neighbourhood Area is outlined below in red:



Lynn Stuart

Lynn Stuart
Chair
Wing Parish Council