



## WENDOVER PARISH COUNCIL

The Clock Tower, High Street, Wendover, Aylesbury,  
Buckinghamshire HP22 6DU

Telephone: 01296 623056 Fax: 0871 2361550  
[clerk@wendover-pc.gov.uk](mailto:clerk@wendover-pc.gov.uk)

28 July 2015

To Aylesbury Vale District Council,

Wendover Parish Council has agreed to apply for the designation of the parish as a neighbourhood area under Regulation 5 of the Neighbourhood Planning (General Regulations) 2012. The Parish Council intends to develop a neighbourhood plan for the parish. Regulation 5 requires the following documents to be supplied with the application:

1. A map of the area in question
2. A statement explaining why the area is considered appropriate to be designated
3. A statement that the body making the application is the relevant body for the purposes of section 61 G of the 1990 Act.

I attach a map of the parish of Wendover showing the current parish boundary. The application refers to the whole of the parish. The area defined is covered by Wendover Parish Council in its entirety.

We understand that under the Localism Act 2011 section 61 F a parish council is authorised to act in relation to a neighbourhood area if that area consists of or includes the whole or part of any area of the council. We confirm that Wendover Parish Council is a constituted parish council and a relevant body to act on behalf of the parish in this context.

Yours faithfully,

Mrs Charlotte Hewes  
Clerk to Wendover Parish Council

## STATEMENT

Wendover Parish Council is making this application as a relevant body for the purposes of section 61 G of the 1990 Town and Country Planning Act.

A handwritten signature in black ink, appearing to read 'CHewes', with a long horizontal stroke extending to the right.

*Mrs Charlotte Hewes*

Clerk to Wendover Parish Council

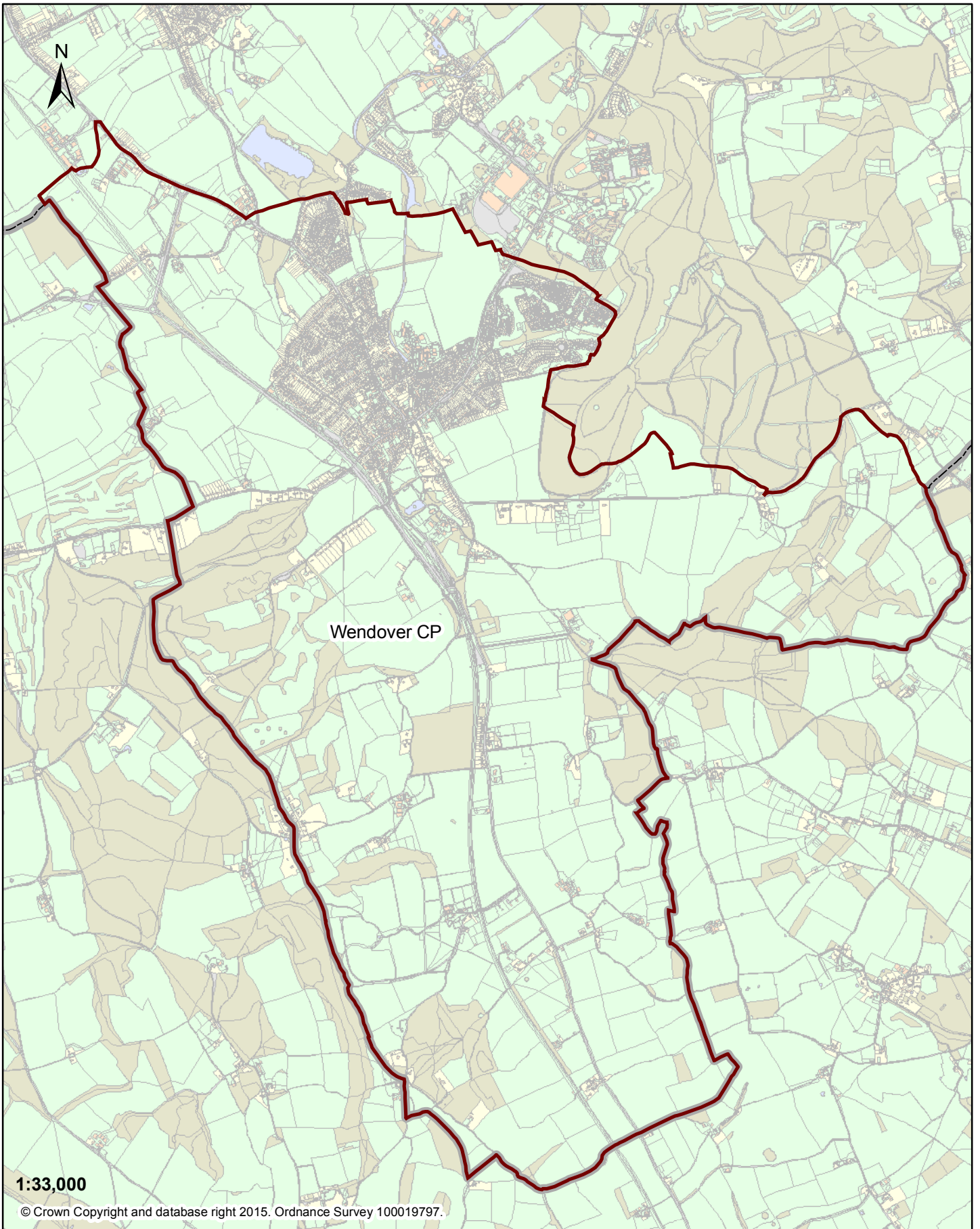
## **Designation statement**


We enclose a map showing the area we wish to have designated for our Neighbourhood Plan which we believe to be appropriate as it is coterminous with the Parish Council's own boundaries.

A handwritten signature in black ink, appearing to read 'CHewes', with a large, sweeping flourish at the end.

*Mrs Charlotte Hewes*

Clerk to Wendover Parish Council



 Wendover Parish

